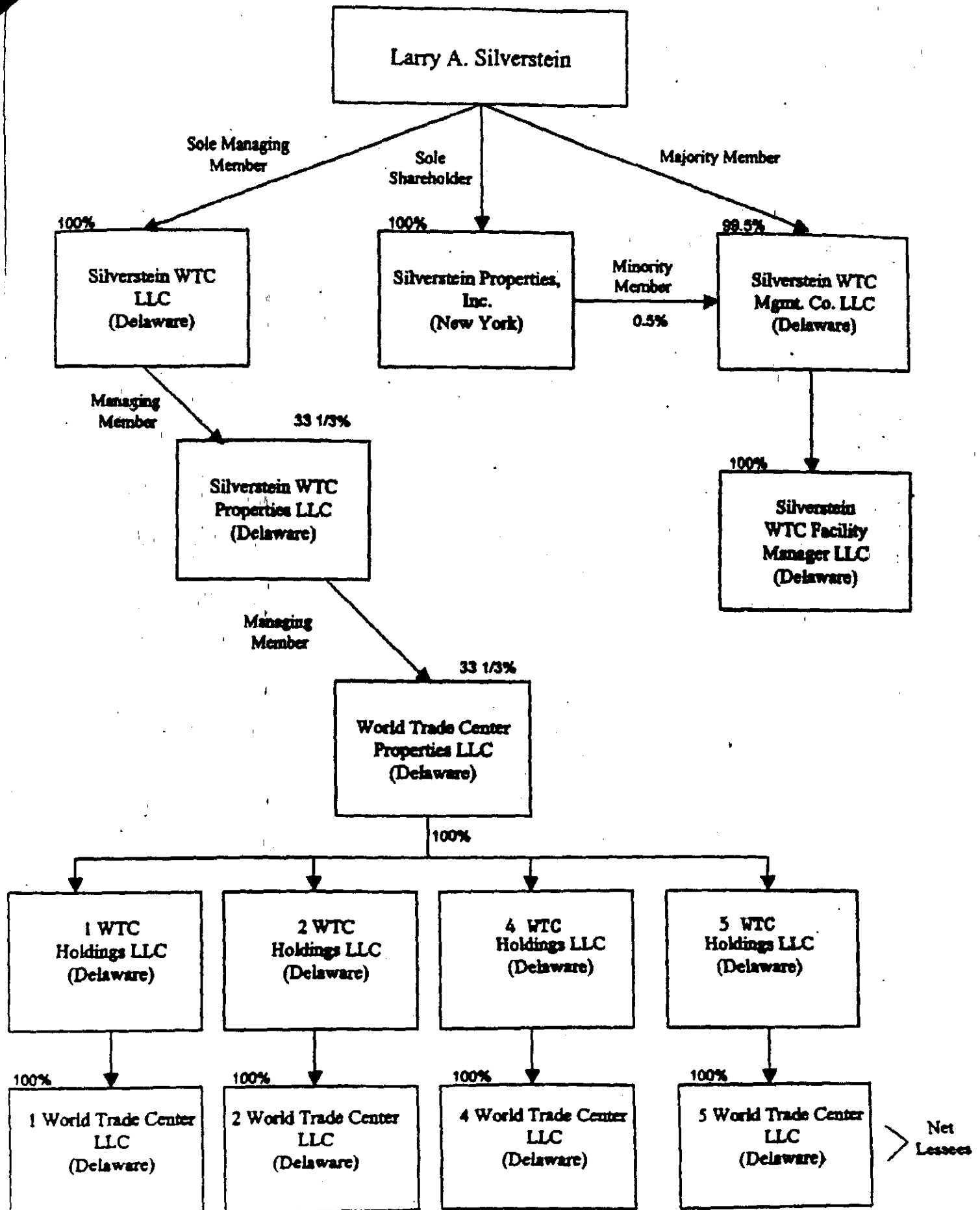


**APPENDIX A
WTC Entities
Structure Chart**



US Airways, Inc., US Airways Group, Inc. and US Airways Group, Inc. d/b/a US Airways Express	03 CV 7018 Dillard 03 CV 7018 Droz 03 CV 6966 Fisher 03 CV 6966 Golinski 02 CV 7143 Hackel 02 CV 7272 Hoglan 03 CV 6183 Hunt 03 CV 7018 Judge 04 CV 1857 Lee 03 CV 7018 Newton 03 CV 7070 Ogonowski 02 CV 7267 Salvo 03 CV 6966 Shontere 02 CV 7244 Tempesta 03 CV 6966 Willcher 03 CV 6968 Wilson
World Trade Center Properties LLC	04 CV 1857 Lee 03 CV 6968 Wilson

II- MOTION FOR SUMMARY JUDGMENT OF WORLD TRADE CENTER PROPERTIES LLC

Defendant	Cases in which Defendant is Moving for Summary Judgment
World Trade Center Properties LLC	04 CV 2519 Aita 04 CV 1857 Lee 02 CV 7244 Tempesta 03 CV 6968 Wilson
American Airlines, Inc. and AMR Corporation	03 CV 6966 Fisher 03 CV 6966 Golinski 03 CV 6183 Hunt 03 CV 7070 Ogonowski 03 CV 7028 Quigley 03 CV 6966 Shontere 03 CV 6966 Willcher 03 CV 6968 Wilson
Continental Airlines	02 CV 6364 Baker 03 CV 7018 Dillard 03 CV 7018 Droz 03 CV 6966 Fisher 03 CV 6966 Golinski 02 CV 7143 Hackel 02 CV 7272 Hoglan 03 CV 6183 Hunt 03 CV 7018 Judge 04 CV 1857 Lee 03 CV 7019 Nacke

	03 CV 7018 Newton 03 CV 7028 Ogonowski 03 CV 7028 Quigley 03 CV 6966 Shontere 03 CV 6966 Willcher
Delta Air Lines, Inc.	03 CV 7018 Dillard 03 CV 7018 Droz 03 CV 6966 Fisher 03 CV 6966 Golinski 02 CV 7143 Hackel 03 CV 6183 Hunt 03 CV 7018 Judge 03 CV 7018 Newton 03 CV 7070 Ogonowski 03 CV 7028 Quigley 03 CV 6966 Shontere 03 CV 6966 Willcher 03 CV 6968 Wilson
Minoru Yamasaki Associates	04 CV 1857 Lee 02 CV 7267 Salvo 02 CV 7244 Tempesta 03 CV 6968 Wilson
Northwest Airlines, Inc.	03 CV 7018 Dillard 03 CV 7018 Droz 03 CV 6966 Fisher 03 CV 6966 Golinski 02 CV 7143 Hackel 02 CV 7272 Hoglan 03 CV 6183 Hunt 03 CV 7018 Judge 04 CV 1857 Lee 03 CV 7018 Newton 03 CV 7070 Ogonowski 03 CV 6966 Shontere 03 CV 6966 Willcher
Skilling Ward Magnusson Barkshire, Inc. and Magnusson Klemencic Associates	04 CV 1857 Lee 02 CV 7244 Tempesta 03 CV 6968 Wilson
Tishman Realty and Construction Company, Inc.	04 CV 1857 Lee 02 CV 7244 Tempesta 03 CV 6968 Wilson